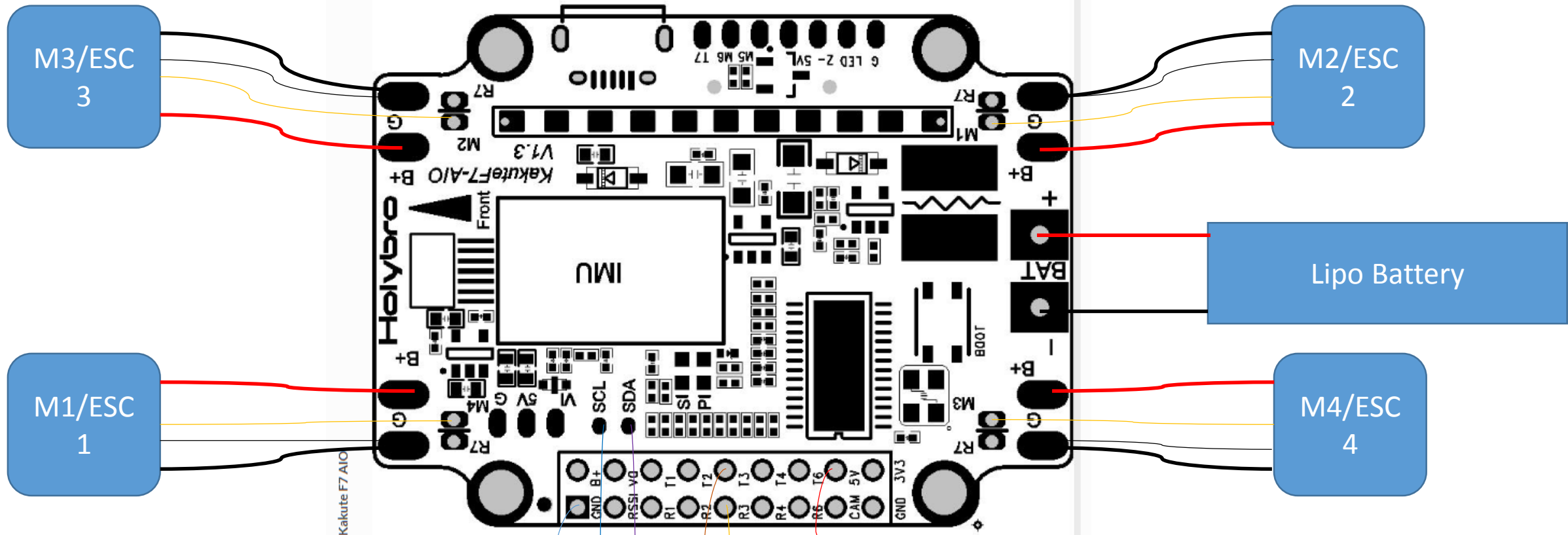


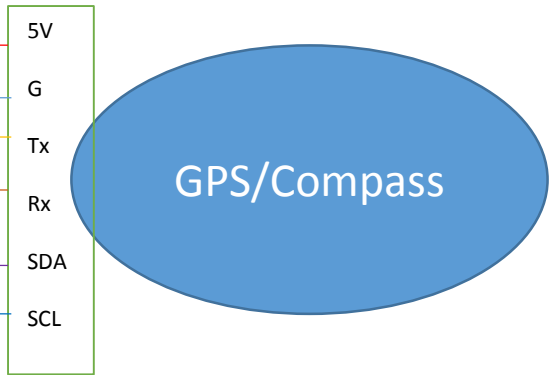
ArduPilot Pinout for HolyBro Kakute F7 AIO



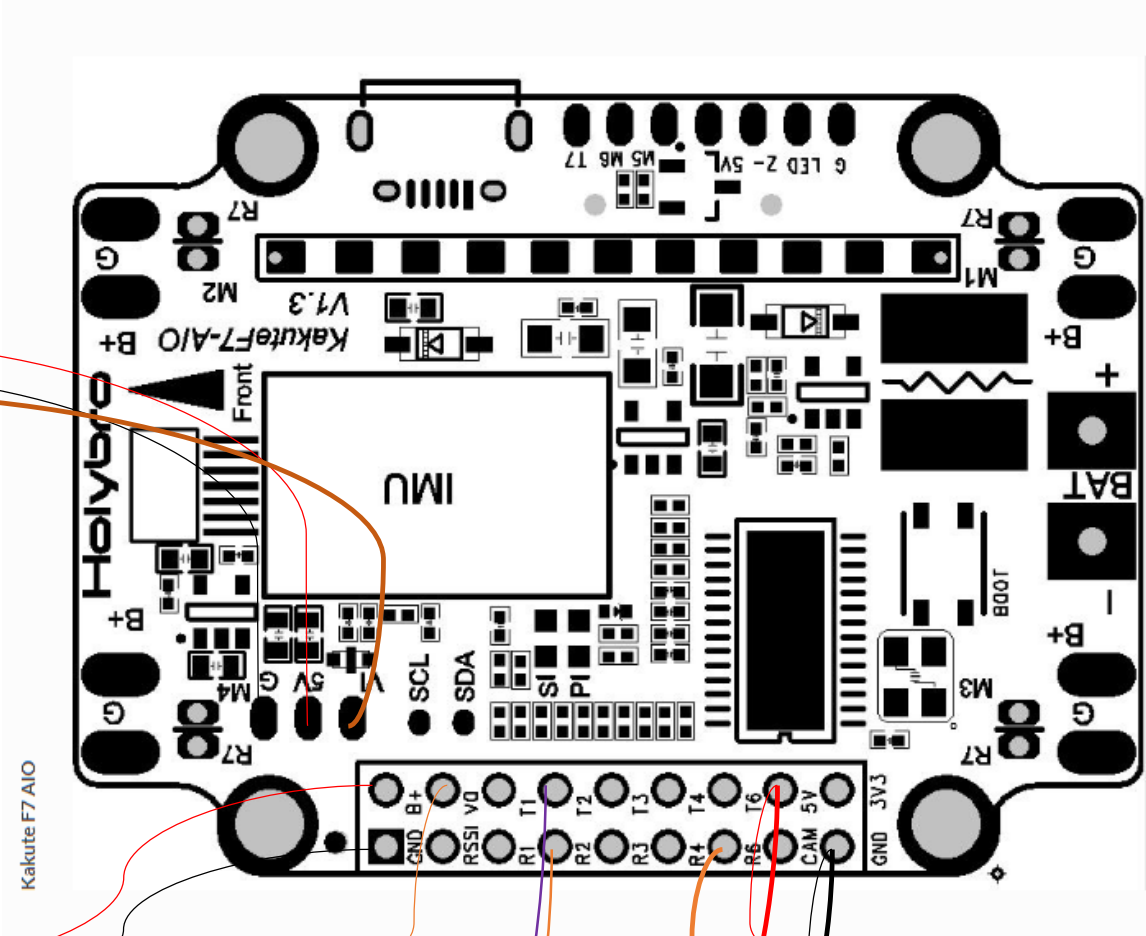
Servo Output Mapping

The PWM outputs are marked M1-M6 in the above pinouts. The corresponding servo outputs are:

- M1 -> Servo Output 4
- M2 -> Servo Output 1
- M3 -> Servo Output 2
- M4 -> Servo Output 3
- M5 -> Servo Output 5
- M6 -> Servo Output 6



ArduPilot Pinout for HolyBro Kakute F7 AIO (Cont.)

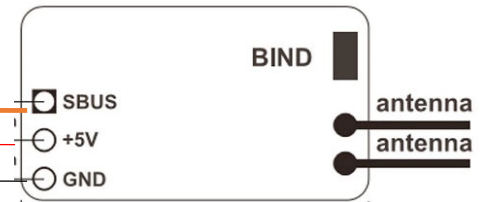
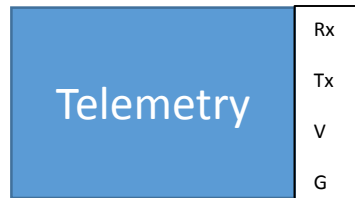


UART Mapping

The UARTs are marked Rn and Tn in the above pinouts. The Rn pin is the receive pin for UARTn. The Tn pin is the transmit pin for UARTn.

- SERIAL0 -> USB
- SERIAL1 -> UART1 (Telem1)
- SERIAL2 -> UART2 (Telem2)
- SERIAL3 -> UART3 (GPS)
- SERIAL4 -> UART4
- SERIAL5 -> UART7
- SERIAL6 -> UART6 (Transmit only, FrSky)

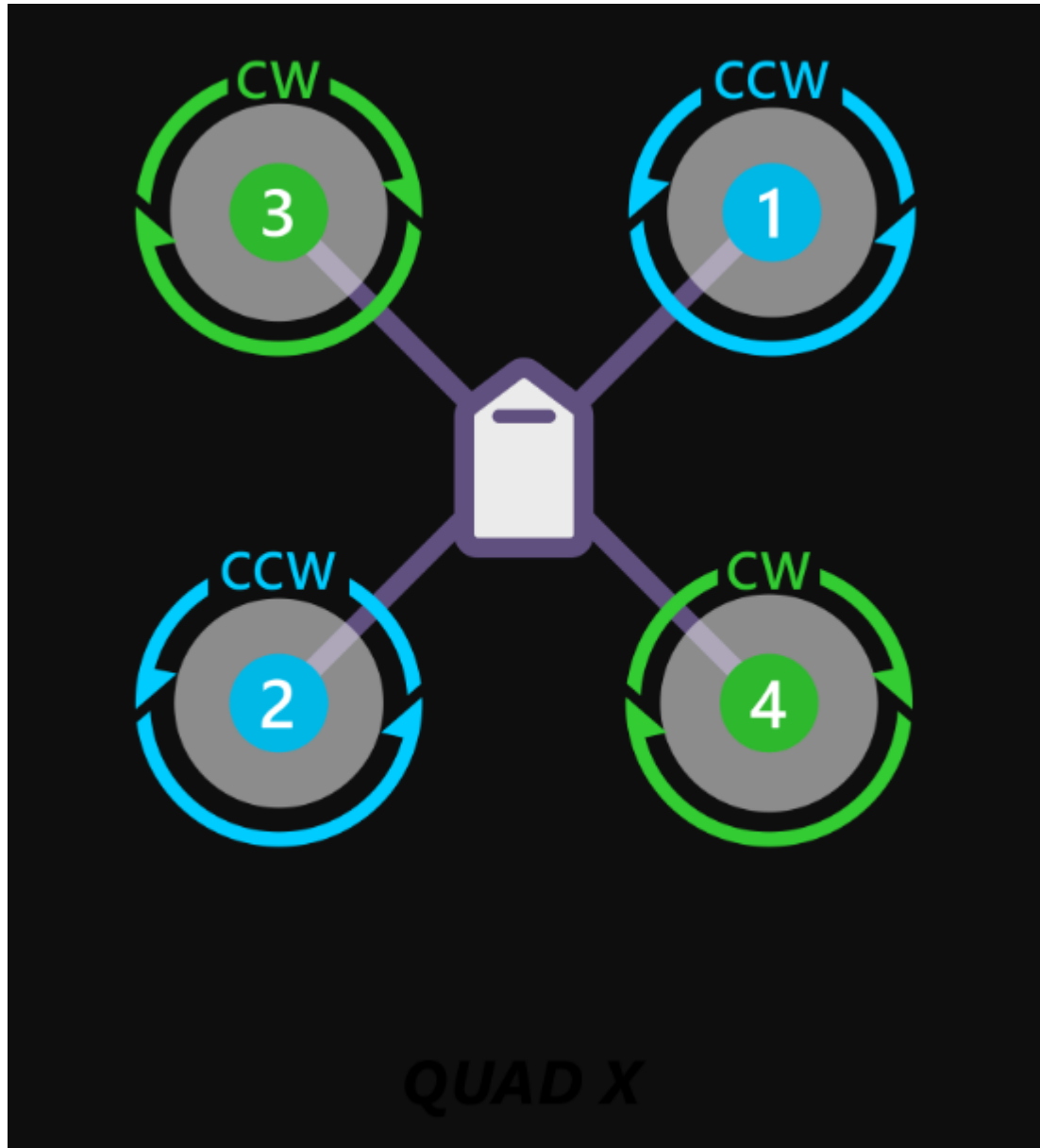
The SERIAL5 port (UART7) is for ESC telemetry, and has a R7 pad on each of the four corners of the KakuteF7 AIO board.



RC Input

RC input is configured on the R6 (UART6_RX) pin. It supports all RC protocols.

Mission Planner Motor Position & Direction



HolyBro Kakute F7 - Motor Position & Direction

