

Typical Interconnect Diagram for Orange Cube Mower Build

Holybro 915 Mhz Radio ports

Pin	Signal	Volt
1 (red)	VCC	+5V
2	RX (IN)	+3.3V
3	TX (OUT)	+3.3V
4	CTS	+3.3V
5	RTS	+3.3V
6 (blk)	GND	GND



Sik Radio for telemetry



RC Receiver



RC Transmitter

Cube TELEM1, TELEM2 ports

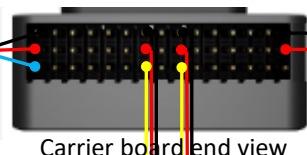
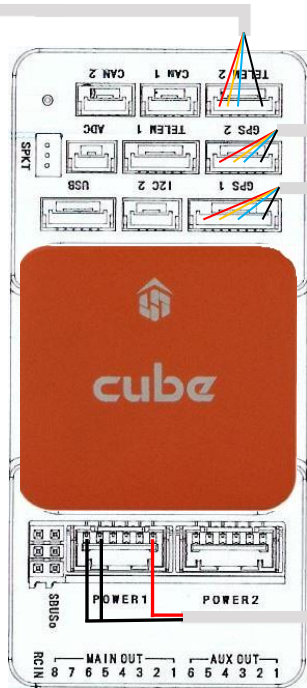
Pin	Signal	Volt
1 (red)	VCC	+5V
2 (blk)	TX (OUT)	+3.3V
3 (blk)	RX (IN)	+3.3V
4 (blk)	CTS	+3.3V
5 (blk)	RTS	+3.3V
6 (blk)	GND	GND

Cube GPS1 port

Pin	Signal	Volt
1 (red)	VCC	+5V
2 (blk)	TX (OUT)	+3.3V
3 (blk)	RX (IN)	+3.3V
4 (blk)	SCL I2C1	+3.3V
5 (blk)	SDA I2C1	+3.3V
6 (blk)	Button	GND
7 (blk)	button LED	GND
8 (blk)	GND	GND

Cube GPS2 port

Pin	Signal	Volt
1 (red)	VCC	+5V
2 (blk)	TX (OUT)	+3.3V
3 (blk)	RX (IN)	+3.3V
4 (blk)	SCL I2C2	+3.3V
5 (blk)	SDA I2C2	+3.3V
6 (blk)	GND	GND

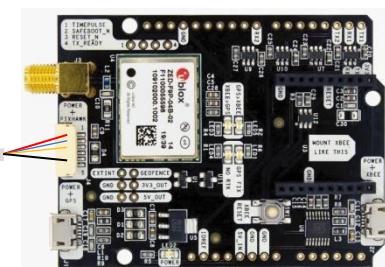


Carrier board end view

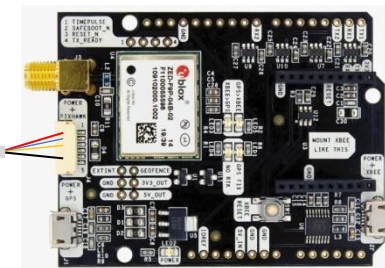


ArduSimple SimpleRTK2B JST-GH Connector

Pin	Signal	Volt
1 (red)	VCC	+5V
2 ZED-F9P	UART1 RX	+3.3V
3 ZED-F9P	UART1 TX	+3.3V
4,5	Not connected	
6 (blk)	GND	GND



Moving Base



Rover GPS

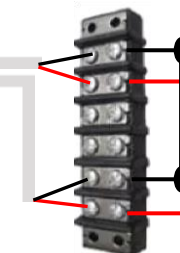
Cube POWER1

Pin	Signal	Volt
1 (red)	VCC	+5V
2 (red)	VCC	+5V
3 (blk)	CURRENT	up to +3.3V
4 (blk)	VOLTAGE	up to +3.3V
5 (blk)	GND	GND
6 (blk)	GND	GND



5v BEC

12v Input



Servo Power

