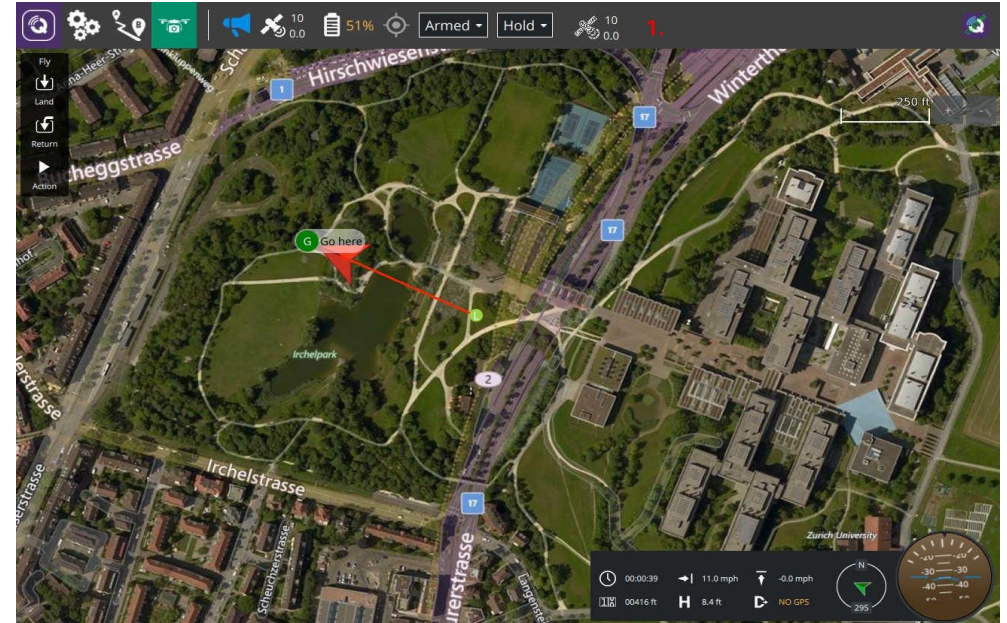
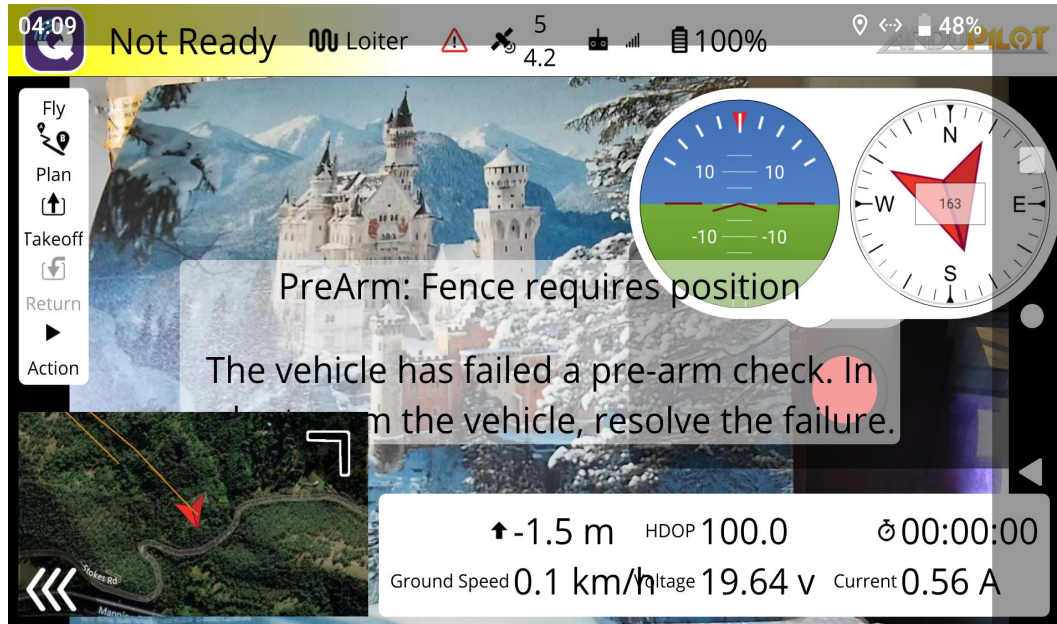


# Modified QgroundControl app for Android 9 and up

Modified version as already found here:

<https://github.com/mavlink/qgroundcontrol/tree/master/custom-example>

Original version



Changes using already modified sample found on github:

- 1) Insert second GPS data field in top row
- 2) Leave everything else in regards to menu and function as original version.

Purpose: To achieve more visible space for live camera view on a 5.5" landscape display as used in the SIYI MK15 controller.

(Original instrument panel and recording button needs to go. New layout needs to be proportional as seen in screenshot)

Note: Apparently only builds and works correctly using Qt 5.15.2 More info: [here:https://dev.qgroundcontrol.com/master/en/getting\\_started/index.html](https://dev.qgroundcontrol.com/master/en/getting_started/index.html)